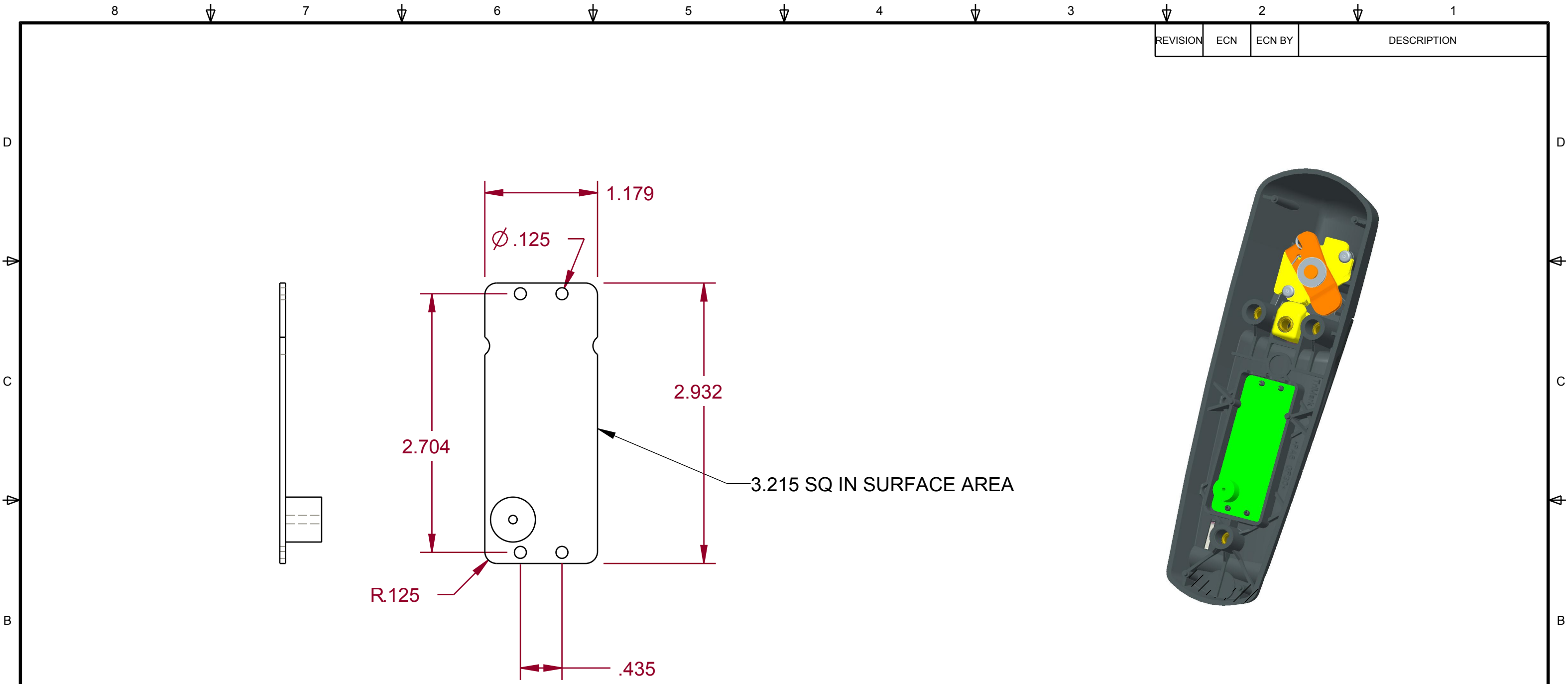


REVISION	ECN	ECN BY	DESCRIPTION
----------	-----	--------	-------------



● INDICATES REQUIRED ASSEMBLY INFORMATION. UOS: THE -00 VERSION SHALL BE THE UNFINISHED VERSION OF PART SHOWN. UOS: ALL DIMENSIONS APPLY BEFORE COATING. (ASME Y14.5M-1994, sec. 2.4.1)		<p>500 Bailey Avenue P. O. Box 350 New Hampton, Iowa 50659 U.S.A. Tel: 641-394-3188 Fax: 641-394-2392</p>	
TOLERANCES UNLESS OTHERWISE SPECIFIED (UOS) ASME Y14.5M-1994 INCH MILLIMETER X.X = ± .1 X = ± 3 X.XX = ± .03 X.X = ± .8 X.XXX = ± .010 X.XX = ± .25		DRAWN BY ??? CHECKED BY ??? PROJECT PROJ# PRODUCT CODE ?????	SCALE 1:500 DATE YYYY-MM-DD
ANGLES X° = ± 3° X.X° = ± 1.0° X.XX° = ± .50°		CUSTOMER CUSTOMER CUSTOMER PART NUMBER CUST_PRT_#	
DO NOT SCALE DRAWING		PART WEIGHT (0.27)	SURFACE AREA (8.00)
REF. T/M QP 4.20-2 FOR SUP. QUALITY REQ. REF. T/M QP 4.20-3 FOR INT. QUALITY REQ.		SIZE B	SCALE 1.0
		DESCRIPTION ??? PART NUMBER PULL_HANDLE_PCE	

8 7 6 5 4 3 2 1

8 7 6 5 4 3 2 1

D
C
B
A

D
C
B
A