

8



7



6



5



4



3



2



1

REVISION	ECN	ECN BY	DESCRIPTION
----------	-----	--------	-------------

D



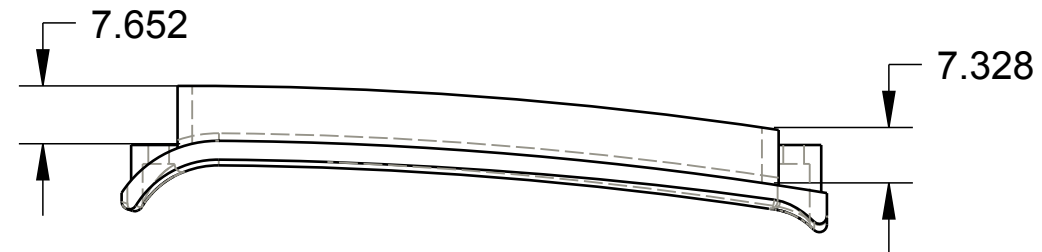
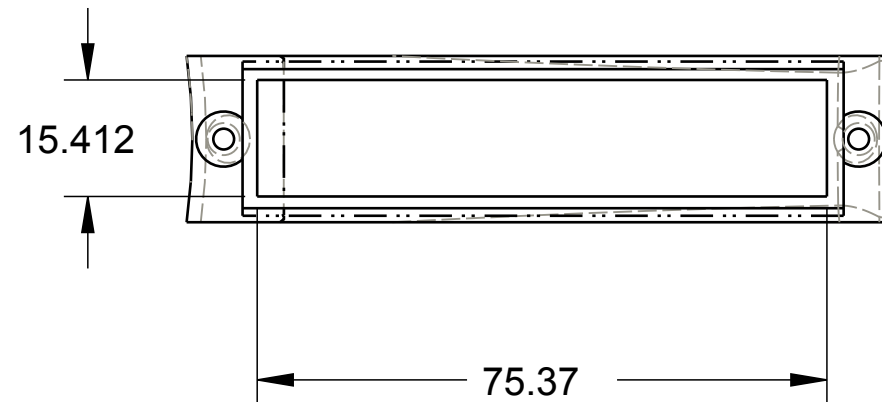
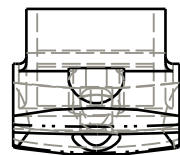
C



B



A



D



C



B



A

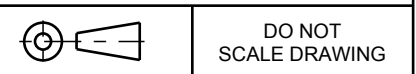
● INDICATES REQUIRED ASSEMBLY INFORMATION.
 UOS: THE -00 VERSION SHALL BE THE UNFINISHED VERSION OF PART SHOWN.
 UOS: ALL DIMENSIONS APPLY BEFORE COATING. (ASME Y14.5M-1994, sec. 2.4.1)

**TOLERANCES
UNLESS OTHERWISE SPECIFIED (UOS)**
 ASME Y14.5M-1994

INCH	MILLIMETER
X.X = ± .1	X = ± 3
X.XX = ± .03	X.X = ± .8
X.XXX = ± .010	X.XX = ± .25

ANGLES

X° = ± 3°
X.X° = ± 1.0°
X.XX° = ± .50°



REF. T/M QP 4.20-2 FOR SUP. QUALITY REQ.
 REF. T/M QP 4.20-3 FOR INT. QUALITY REQ.

DRAWN BY	PRODUCT CODE
CHECKED BY	
PROJECT	
CUSTOMER	
CUSTOMER PART NUMBER	
PART WEIGHT	SURFACE AREA



500 Bailey Avenue
 P. O. Box 350
 New Hampton, Iowa 50659 U.S.A.
 Tel: 641-394-3188
 Fax: 641-394-2392

This drawing and the information contained herein is the property of TriMark Corporation and shall not be used for any purpose without our written consent.

DESCRIPTION
SIZE SCALE PART NUMBER

8



7



6



5



4



3



2



1